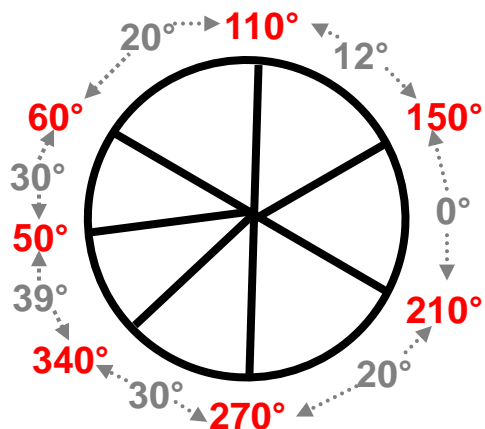
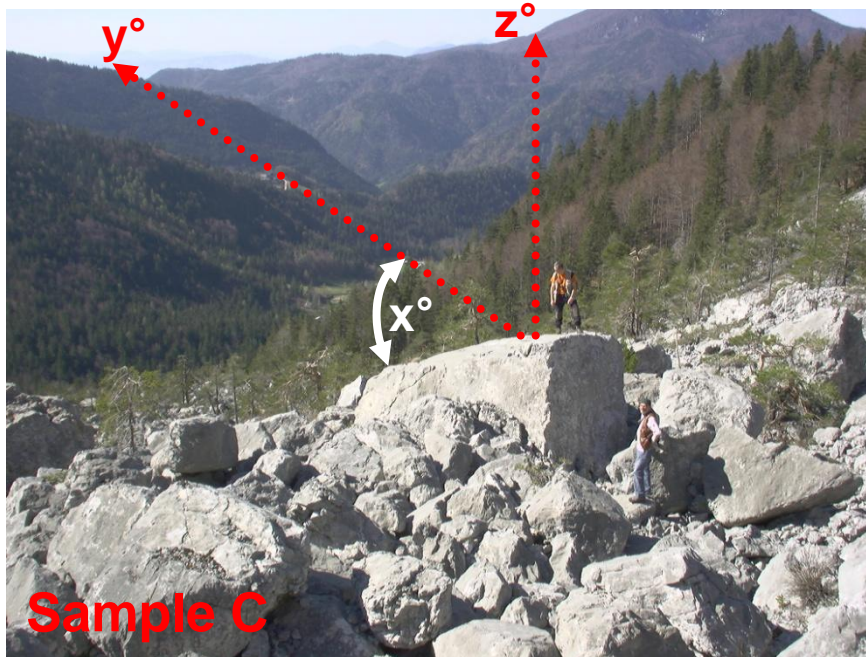


Infos for TCN samples

Shielding of **Sample A**

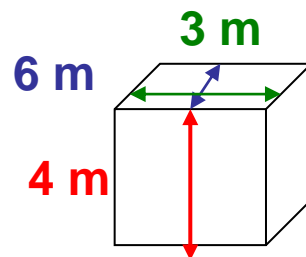


x° shielding from y° to z°



additional info/documentation needed:

- altitude
- position: °N / °E
- dip/slope for bedrock (e.g. 40°)
- sample depth ($\leq 5\text{cm}$)
- photos of sample taking / boulder (if possible with "scale", i.e. a person at the boulder and a hammer/rubber duck for sample taking)
- rough boulder size



Size of **Sample C**

Further “helpful” comments for taking TCN samples

- Avoid – if possible – samples from the edge or near the edge of a boulder → the **middle** would be the best (**Sample B** is a bad example!)
- Try to take samples from the very **surface (both: boulder & bedrock)**, i.e. not deeper than 5 cm. Note the depth!
- Go for **bedrock** or the **big boulders** → “Big is beautiful!” or “Size does matter!” ;-)
- Avoid – if possible – “covered” samples, i.e. by soil, next to a tree.
- **2 kg** of one sample is a good starting weight!
- Put the pieces belonging to one sample into a **bag**. Put a **small piece of paper** with the sample name/number (please start with **XX01**, then XX02, XX03 etc.) into the bag, too. Close the bag and tape it all around with “**brown sticky tape**”. Mark the name on the outside. If you need more than one bag, mark the second bag as XX01b. The third bag with XX01c and so on.